

DARLING ICE CREAM

by Anna Hidesjö in collaboration with Falkgarn.

@crochetbypani

You'll need: Falkgarn Emma, stitch marker, yarning needle, stuffing and safety eyes (6mm).

A cup with some hot bevarage and a blanket is nice for this cold project.

colours:

vit – 851 (white)

cyklamen – 705 (cyklamen)

syren – 919 (syren)

ljuslila – 724 (light purple)

ecru – 005 (ecru)

dusty pink – 978 (dusty pink)

turkos – 714 (turquoise)

ljusblå – 834 (light blue)

grön kaki – 823 (green kaki)

vinröd – 866 (wine red)

Hook: 2.5 mm

Good to know: The finished ice cream is approximately 11-12 cm long.

Please read the pattern before you start.



US- Terms:

r – round

mc – magic circle

s – stitch

sc – single crochet

ch – chain stitch

ch-sp – chain space

flo – front loop only

bl – back loop

hdc – half double crochet

dc – double crochet

ss – slip stitch

inc – increase, 2 stitches in one

-- – Repeat the instructions between *this space* according to the pattern

dec – decrease , 2 stitches together

fo – fasten off

ICE CREAM

The ice cream and cone is crocheted in one piece, crochet in a spiral.

Colour 851

r 1: 6 sc in a mc = 6 s

r 2: 2 sc in each stitch = 12 s

r 3: *1 sc, inc* repeat *--* 6 times = 18 s

r 4: *2 sc, inc* repeat *--* 6 times = 24 s

r 5: 1 sc in each s = 24 s

r 6: *3 sc, inc* repeat *--* 6 times = 30 s

r 7: 2 sc, inc *4 sc , inc* repeat *--* 5 times, 2 sc = 36 s

r 8: 1 sc in each stitch = 36 s

r 9: *5 sc, inc* repeat *--* 6 times = 42 s

r 10 & 11: 1 sc in each stitch = 42 s

r 12: *5 sc, dec* repeat *--* 6 times = 36 s

r 13: 1 sc in each stitch = 36 s

r 14: 2 sc, dec *4 sc, dec* repeat *--* 5 times , 2 sc = 30 s

r 15: *3 sc, dec* repeat *--* 6 times = 24 s

r 16:

flo

1 sc, ch 5, 4 hdc down your ch, 1 ss

4 sc, ch 4 3 hdc down your ch, 1 ss

4 sc, ch 3 2 hdc down your ch 1 ss

4 sc, ch 5 4 hdc down your ch, 1 ss

4 sc, ch 4 3 hdc down your ch, 1 ss

4 sc, ch 3 2 hdc down your ch, 1 ss

Finish the r with 2 sc and make a ss in the next s and fo. Leave a long tail (50-60 cm). This will be used later when we assemble the ice cream.



the loop closest to you is the front loop.



the picture on the left shows you the first chain 5 in round 16. Hdc in the second chain space from your hook. In the picture on the right I've put the stitch marker in the same stitch that we started our chains in and that's where we're going to finish it off with a ss.



This is how the back of your work will look like. At the bottom of your work, there will be small little bumps. Those are your back loops and where we will begin our work when we make the cone! Put a stitch marker in the first back loop. The last picture shows how it looks when done.

The ice cream is done, now let's do the cone!

CONE

In this round we're going to pick up stitches in the back loop we got! Look at the pictures and I will show you how to make your first stitch.

Start off with taking colour 705 and make a slip knot on your hook.



pull through the first back loop from the previous round and yarn over, pull through and then pull through both loops on the hook.



pull through the first back loop from previous round and yarn over, pull through and then pull through both loops on the hook.

If you want eyes on your ice cream you should put them on now, if you don't have any safety eyes or have very small children, you can always embroider the eyes, or just make one without eyes. You place the eyes where you want them. I suggest that you put them between round 12 & 13.

r 1: *blo* 1 sc in each bl = 24 s

r 2-5: 1 sc in each s = 24 s

start stuffing your ice cream!

r 6: *10 sc, dec* repeat *--* 2 times = 22 s

change colour to colour 919 (you can see how to change colour below)

r 7: *9 sc, 2 dec* repeat *--* 2 times = 20 s

r 8: *8 sc, 2 dec* repeat *--* 2 times = 18 s

somewhere around here it'll be good too start stuffing your cone, then keep stuffing it as you work.

r 9: *7 sc, 2 dec* repeat *--* 2 times = 16 s

r 10: *6 sc, 2 dec* repeat *--* 2 times = 14 s

r 11: *5 sc, 2 dec* repeat *--* 2 times = 12 s

r 12: *4 sc, 2 dec* repeat *--* 2 times = 10 s

r 13: *3 sc, 2 dec* repeat *--* 2 times = 8 s

r 14: *2 sc, 2 dec* repeat *--* 2 times = 6 s

r 15: 1 sc in each stitch = 6 s

make a ss in the next s and fo. Stuff it one last time and weave in the yarn end.

Change your colour:



start your single crochet as usual, when you have two loops on your hook, simply just pic up the new colour and make your last yarn over with the new colour and pull through both loops on your hook. Weave in the ends as you go!

The ice cream is done, let's make some toppings!

TOPPINGS

the parts below are done separately and later attached to your darling ice cream!

Topping

work in a spiral

colour 724

r 1: 6 sc in a mc = 6 s

r 2: 2 sc in each stitch = 12 s

r 3: *1 sc, inc* repeat *--* 6 times = 18 s

r 4: *2 sc, inc* repeat *--* 6 times = 24 s

r 5: 1 sc, inc *3 sc, inc* repeat *--* 6 times 2 sc = 30 s

r 6: ch 7 , 6 hdc down your ch, ss, 4 sc
ch 3 , 2 hdc down your ch, ss, 4 sc
ch 5 , 4 hdc down your ch, ss, 4 sc repeat *--* 2 times
ch 3 , 2 hdc down your ch, ss, 4 sc
ch 7 , 6 hdc down your ch, ss, 4 sc
ch 5 , 4 hdc down your ch, ss, 4 sc
fo and leave a long tail (50-60 cm)



Whipped cream

colour 005

r 1: Make a mc, ch 3, your ch 3 counts as your first dc, make 19 dc in your mc.

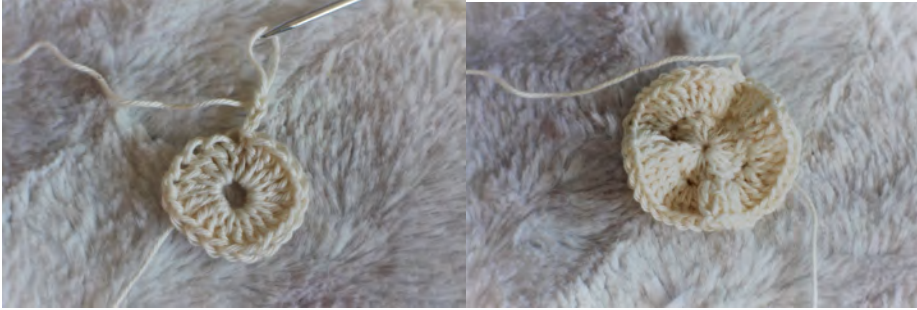
finish the r make a ss in your third loop from your ch 3 = 20 m

r 2: ch 3, 2 dc in the same s, 3 dc in each stitch to the end of r.

Finish your round with a ss in your third loop from your ch 3 = 60 m

ss in the next s and fo, leave a tail (40 cm ca) for assamble

don't forget to tighten your mc so that the whipped cream gets wavy!



Blueberry

work in a spiral

colour 834

r 1: 5 sc in a mc = 5 s

r 2: 2 sc in each s = 10 s

r 3: 1 sc in each s = 10 s

attach a stalk with colour 823, see pictures below.



how to attach your stalk: Snip off some yarn (20-25 cm) and make a slip knot, thread your yarning needle and pull it through your mc and voila!



Save your ends, use them to stuff your blueberry.

r 4: *2 sc dec* repeat *--* 5 times = 5 s

ss in the next stitch and fo, leave a long tail (40 cm ca) for assamble.

I made two more blueberries using the colours 714 (stalk in 978) and 978 (stalk in 866)

ASSEMBLE



Take your topping and thread your needle with the end you get in the middle of your magic circle. Pull the yarn through the middle of your darling ice cream and leave it in the back of your work. Pin your work properly and begin sewing the dripping parts down. If you like you can make a tiny stitch at the bottom of the drip. I did that just to make that little hole close (you can see the hole in the middle picture)

Pull through the ice cream and out at the top of the drip.



look at the pictures and you'll see how i did it. Basically it's all about making them stay down, so sew up in your drip and down in the same hole. Continue in the same way the whole work around. When satisfied, just snip off your end and sew back and forth a bit and then cut the yarn!



Now we will fasten the topping. This is done in the same way as with the white drips but you also put a stitch between the drips, to make it secure. So when you sew back in to the top of the drip you sew up in between the drips and place a stitch by pulling the yarn through the topping and down in the next stitch beside and then down at the same place you came up in. Look at the pictures and you'll see what i mean! Continue the whole work around. Leave your end out the same hole you got the first thread of topping.



tie them in to a knot and gently push them back in the ice cream! This technique you use throughout the whole attaching, just to make it as secure as possible!



pin down your cream. In the second picture you can see that i drew some lines, just to show you where i fastened my thread before sewing the cream on to my darling ice cream. place the stitches where you want them and to get the cream wavy.

When you place your blueberries you use the same principle as for the other parts. Thread your yarning needle, and sew it on where you want it. Be sure to only sew back and forth inside of the ice cream. Leave your thread out of a hole and when you have all three done, tie them into a knot together and push them back inside.

As a finishing touch I placed some cute little cheeks on my darling ice cream, besides the eyes!

HURRAY!

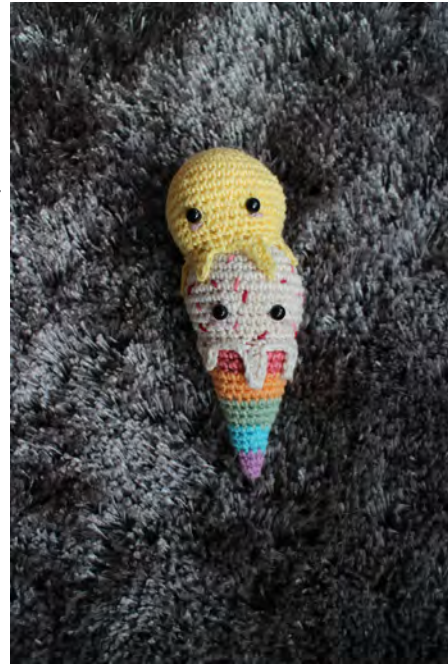
You are now finished, well done you and thanks for making the darling ice cream with me!

Please tag me on social media with @crochetbypani and #darlingicecream so I get to see your fantastic creations!

EXTRA

I can not do this pattern without showing and telling you that there are endless of ways to make your darling ice cream! Make it in different colour combinations, add mor toppings or less, why not make some sprinkles or put another ice cream ball on top?

To make another flavour you just do round 1-16 were it say "taste". The last round (16) you crochet in both loops. Then you attach it the same way you attached the topping, put it were you want it to be, pin it down and start sewing!



© 2018 crochetbypani Anna Hidesjö

If you choose to use my pattern in content published in social media, remember to credit me by linking to either my Facebook page or Instagram. You can also tag me using either [@crochetbypani](#) or #crochetbypani, so I can see your lovely creations. You are not allowed to copy my pattern or take parts of my pattern and claim them as your own. You are not allowed to sell my pattern or items that were made using my pattern. You are allowed to give away items that were made using my pattern, if you credit me, crochetbypani, as the creator of the pattern. Keep in mind that designing patterns takes a lot of time and effort, so please respect these rules! HUGS!

